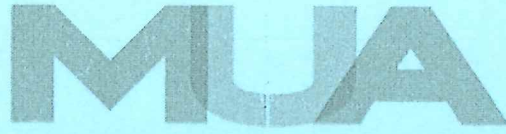


The
Management
University
of Africa



Sponsored by the Kenya Institute of Management

POST GRADUATE UNIVERSITY EXAMINATIONS

SCHOOL OF MANAGEMENT AND LEADERSHIP

DEGREE OF DOCTOR OF PHILOSOPHY IN MANAGEMENT AND
LEADERSHIP

DML 900: ADVANCED STATISTICS

DATE: 8TH DECEMBER 2018

DURATION: 3 HOURS

MAXIMUM MARKS: 50

INSTRUCTIONS:

1. Write your registration number on the answer booklet.
2. **DO NOT** write on this question paper.
3. This paper contains **FOUR (4)** questions.
4. Question **ONE** is **compulsory**.
5. Answer any other **TWO** questions.
6. Question **ONE** carries **30 MARKS** and the rest carry **10 MARKS** each.
7. **Write all your answers in the Examination answer booklet provided**

QUESTION 1

- (a) Define the term *inference* as applied in statistics. (3 marks)
- (b) A company has the distribution of education levels for its employees as summarized in figure 1(b).

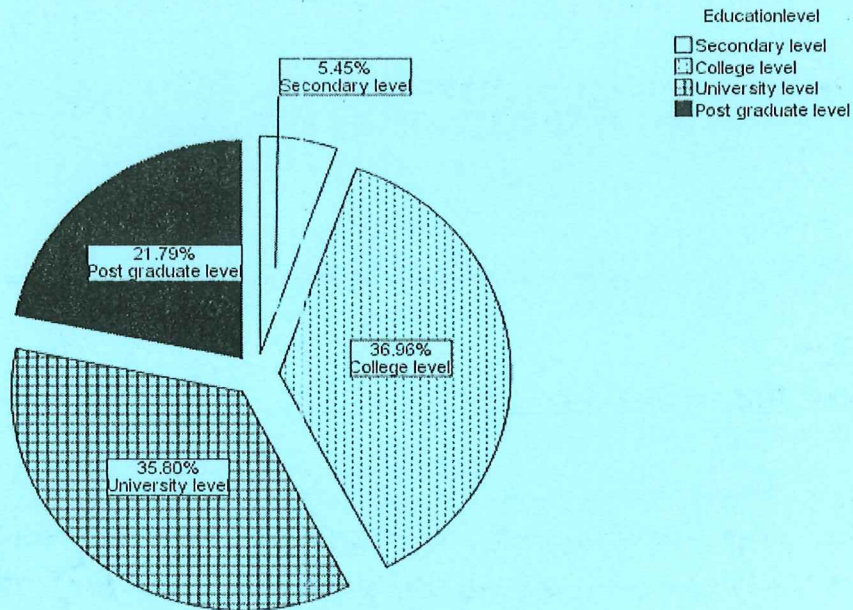


Figure 1(b) : Education Level

- (i) Interpret the findings. (2 marks)
- (ii) Given that the company had 257 employees, copy and complete table 1(b). (4 marks)

Category	count	Percentage	Cummulative Percentage
Secondary Level
College Level
University Level
Postgraduate Level

Table 1(b) : Levels of Education

- (c) The average number of accidents in a year attributed to taxi drivers in a city is 3. Out of 1,000 taxi drivers, find approximately the number of drivers with;
- (i) No accident in a year. (2 marks)
- (ii) More than 3 accidents in a year. (4 marks)
- (d) As part of an investigation into levels of overtime working, a company decides to tabulate the number of orders received weekly and compare this with the total weekly overtime worked to give the following:

Week Number	1	2	3	4	5	6	7	8	9	10
Orders received (X)	83	22	107	55	48	92	135	32	67	122
Total Overtime (Y)	38	9	42	18	11	30	48	10	29	51

Table 1(d): Company Data

- (i) Fit a linear regression line by estimating a and b in the equation $Y = a + bX$. Interpret the fitted equation. **(7 marks)**
- (ii) Predict the total overtime for 88 orders. **(2 marks)**

(e) Rainfall at two towns A and B for 10 years were as presented in **table 1(e)**.

Table 1e: rainfall in town A and B

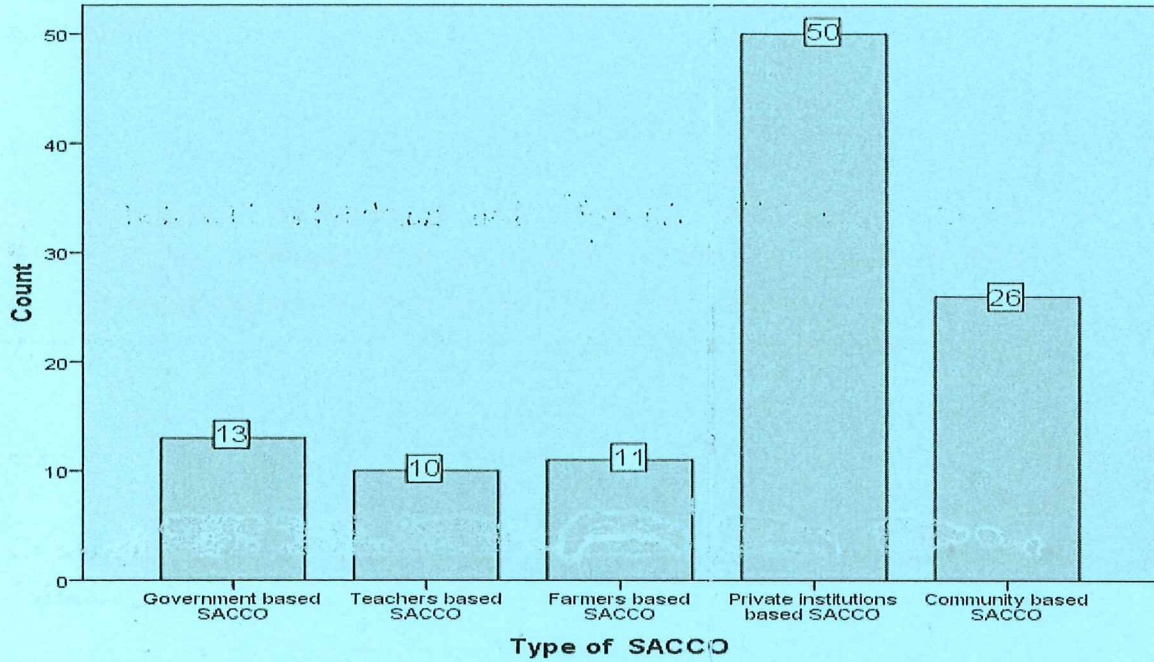
Year	1	2	3	4	5	6	7	8	9	10
Town A	40	30	34	39	43	25	49	40	45	55
Town B	39	28	34	35	41	23	45	37	43	55

Test whether the two towns have the same variation in rainfall received at 5% level of significance. **(6 marks)**

QUESTION 2

(a) Figure 2(a) summarizes the data on the number of different types of sacco in a certain county.

Figure 2(a): SACCO Data



- (i) Interpret the findings. (2 marks)
- (ii) Copy and Complete table 2(b) using figure 2(a). (3 marks)

Category	count	Percentage
Government Based SACO
Teachers based SACCO
Farmers based SACCO
Private Institutions Based SACCO		
Community Based SACCO

Table 2(b) : SACCO Data

(b) The time taken to complete a particular type of job is distributed approximately normally with mean 1.8 hours and standard deviation 0.1 hours.

- (i) If "normal time" work finishes at 5.00pm and a job is started at 3.00pm, what is the probability that the job will need overtime payments? **(3 marks)**
- (ii) What estimated completion time (to the nearest minute) should be set so that there is 90% chance that the job is completed on time? **(2 marks)**

QUESTION 3

(a) A sample of eight employees is taken from the production department of a light engineering factory. The data in table 3(a) relate the number of weeks experience in the wiring of components, and the number of components which were rejected as unsatisfactory last week.

Employee	A	B	C	D	E	F	G	H
Weeks of Experience (X)	4	5	7	9	10	11	12	14
Number of rejects (Y)	21	22	15	18	14	14	11	13

Table 3(a): Factory Data

Calculate the coefficient of correlation for these data and interpret its value.

(5 marks)

(b) Six candidates apply for a job and are separately interviewed. Based on past experience, any candidate has a two-thirds probability of passing to a second interview.

- (i) What is the probability that all the candidates pass to a second interview? **(2 marks)**
- (ii) The successful candidates are all invited to the reception area of the main offices, ready for a second interview. If the reception area has only three seats, what is the probability that there are not enough seats for these candidates? **(3 marks)**

QUESTION 4

Your company manufactures components for use in the production of motor vehicles. The number of components produced each day over a forty day period is tabulated in table 4(b).

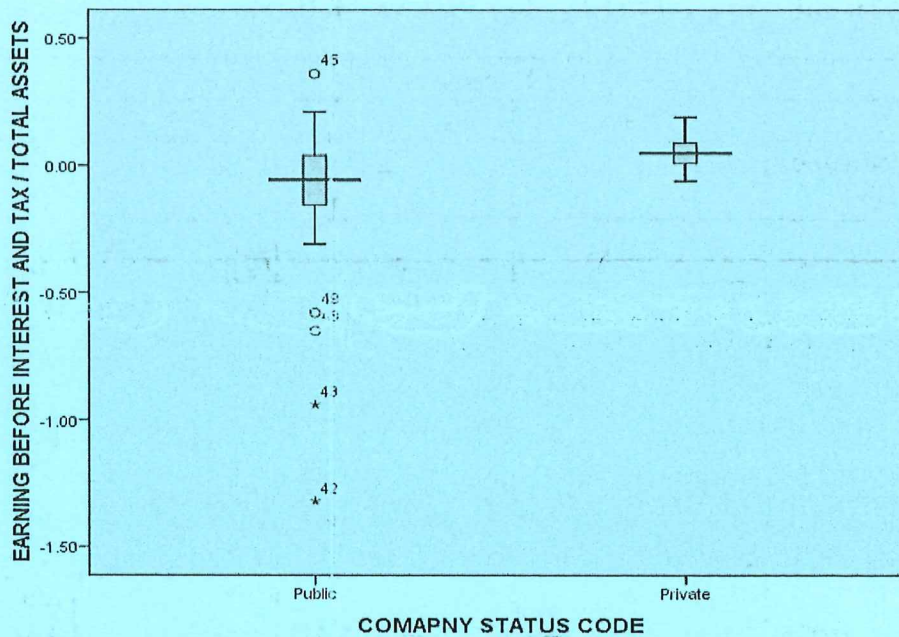
Table 4b: motor vehicle components

553	526	521	528	538	523	538	546	524	544
532	554	517	549	512	528	523	510	555	545
524	512	525	543	532	533	519	521	536	534
541	535	531	551	535	519	530	549	518	531

Calculate the 95% confidence interval for the true mean of components produced in a day. **(5 marks)**

- (a) Table 4(b) summarizes the performance (*Earning Before Interest And Tax / Total Assets*) of private and public sugar companies in Kenya for a period of one year.

Figure 4(a): Earnings Data



- (i) Which sector performed better (Private or Public)? Discuss. (1 mark)
- (ii) Discuss the performance of the public sugar companies. (2 marks)
- (iii) Discuss the performance of the private sugar companies. (2 marks)

Critical Values of the Durbin-Watson Statistic

Sample Size	Significance Level	K = Number of Regressors				dL	dU		
		1		2				3	4
		dL	dU	dL	dU			dL	dU
15	0.01	.81	1.07	.70	1.25	.59	.49		
	0.025	.95	1.23	.83	1.40	1.46	1.70		
	0.05	1.08	1.36	.95	1.54	.71	.59		
20	0.01	.95	1.15	.86	1.27	.82	.69		
	0.025	1.08	1.28	.99	1.41	1.75	1.97		
	0.05	1.20	1.41	1.10	1.54	.77	.63		
						1.41	1.57		
						.89	.79		
						1.55	1.70		
						1.00	.90		
						1.68	1.83		

FORMULAE

$$\bar{X} = \frac{\sum_{i=1}^n X_i}{n}$$

$$S^2 = \frac{\sum_{i=1}^n (X_i - \bar{X})^2}{n-1}$$

$$\sigma^2 = \frac{\sum_{i=1}^n (X_i - \bar{X})^2}{n}$$

Poisson Formula

$$P(X = x) = \frac{e^{-\lambda} \lambda^x}{x!}$$

$$\mu = \lambda$$

$$\sigma^2 = \lambda$$

Binomial Formulae

$$P(X = x) = C_x^n P^x (1 - P)^{n-x}$$

$$\mu = np$$

$$\sigma^2 = npq$$

$$T = \frac{X - \mu}{S}$$

$$T_{calc} = \frac{\bar{X} - \mu_0}{S/\sqrt{n}}$$

$$T_{crit} = t_{n-1}(1 - \alpha)$$

$$T_{crit} = t_{n-1}(1 - \alpha/2)$$

$$Z = \frac{X - \mu}{\sigma}$$

$$Z_{calc} = \frac{\bar{X} - \mu_0}{\sigma/\sqrt{n}}$$

$$Z_{crit} = Z(\alpha)$$

$$Z_{crit} = Z(\alpha/2)$$

$$F = \frac{S_1^2}{S_2^2}; S_1^2 \geq S_2^2$$

$$F_{crit} = F_{((n_1-1), (n_2-1))}(\alpha)$$

$$F_{crit} = F_{((n_1-1), (n_2-1))}(\alpha/2)$$

$$\chi_{calc}^2 = \frac{(n-1)S^2}{\sigma_0^2}$$

$$r = \frac{\sum_{i=1}^n X_i Y_i - n\bar{X}\bar{Y}}{[(\sum_{i=1}^n X_i^2 - n\bar{X}^2)(\sum_{i=1}^n Y_i^2 - n\bar{Y}^2)]^{\frac{1}{2}}}$$

$$\beta_1 = \frac{\sum_{i=1}^n X_i Y_i - n\bar{X}\bar{Y}}{\sum_{i=1}^n X_i^2 - n\bar{X}^2}$$

$$\beta_0 = \bar{Y} - \beta_1 \bar{X}$$

$$\mu = E(X) = \sum_x X P(X)$$

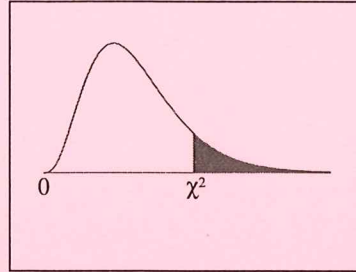
$$\sigma^2 = \sum_x X^2 P(X) - \mu^2$$

$$\bar{X} - Z_{(1-\alpha/2)} * \frac{S}{\sqrt{n}} \leq \mu \leq \bar{X} + Z_{(1-\alpha/2)} * \frac{S}{\sqrt{n}}$$

$$n = \frac{Z^2 pq}{e^2}$$

$$n_f = \frac{n}{1 + \frac{n-1}{N}}$$

Chi-Square Distribution Table



The shaded area is equal to α for $\chi^2 = \chi^2_{\alpha}$.

<i>df</i>	$\chi^2_{.995}$	$\chi^2_{.990}$	$\chi^2_{.975}$	$\chi^2_{.950}$	$\chi^2_{.900}$	$\chi^2_{.100}$	$\chi^2_{.050}$	$\chi^2_{.025}$	$\chi^2_{.010}$	$\chi^2_{.005}$
1	0.000	0.000	0.001	0.004	0.016	2.706	3.841	5.024	6.635	7.879
2	0.010	0.020	0.051	0.103	0.211	4.605	5.991	7.378	9.210	10.597
3	0.072	0.115	0.216	0.352	0.584	6.251	7.815	9.348	11.345	12.838
4	0.207	0.297	0.484	0.711	1.064	7.779	9.488	11.143	13.277	14.860
5	0.412	0.554	0.831	1.145	1.610	9.236	11.070	12.833	15.086	16.750
6	0.676	0.872	1.237	1.635	2.204	10.645	12.592	14.449	16.812	18.548
7	0.989	1.239	1.690	2.167	2.833	12.017	14.067	16.013	18.475	20.278
8	1.344	1.646	2.180	2.733	3.490	13.362	15.507	17.535	20.090	21.955
9	1.735	2.088	2.700	3.325	4.168	14.684	16.919	19.023	21.666	23.589
10	2.156	2.558	3.247	3.940	4.865	15.987	18.307	20.483	23.209	25.188
11	2.603	3.053	3.816	4.575	5.578	17.275	19.675	21.920	24.725	26.757
12	3.074	3.571	4.404	5.226	6.304	18.549	21.026	23.337	26.217	28.300
13	3.565	4.107	5.009	5.892	7.042	19.812	22.362	24.736	27.688	29.819
14	4.075	4.660	5.629	6.571	7.790	21.064	23.685	26.119	29.141	31.319
15	4.601	5.229	6.262	7.261	8.547	22.307	24.996	27.488	30.578	32.801
16	5.142	5.812	6.908	7.962	9.312	23.542	26.296	28.845	32.000	34.267
17	5.697	6.408	7.564	8.672	10.085	24.769	27.587	30.191	33.409	35.718
18	6.265	7.015	8.231	9.390	10.865	25.989	28.869	31.526	34.805	37.156
19	6.844	7.633	8.907	10.117	11.651	27.204	30.144	32.852	36.191	38.582
20	7.434	8.260	9.591	10.851	12.443	28.412	31.410	34.170	37.566	39.997
21	8.034	8.897	10.283	11.591	13.240	29.615	32.671	35.479	38.932	41.401
22	8.643	9.542	10.982	12.338	14.041	30.813	33.924	36.781	40.289	42.796
23	9.260	10.196	11.689	13.091	14.848	32.007	35.172	38.076	41.638	44.181
24	9.886	10.856	12.401	13.848	15.659	33.196	36.415	39.364	42.980	45.559
25	10.520	11.524	13.120	14.611	16.473	34.382	37.652	40.646	44.314	46.928
26	11.160	12.198	13.844	15.379	17.292	35.563	38.885	41.923	45.642	48.290
27	11.808	12.879	14.573	16.151	18.114	36.741	40.113	43.195	46.963	49.645
28	12.461	13.565	15.308	16.928	18.939	37.916	41.337	44.461	48.278	50.993
29	13.121	14.256	16.047	17.708	19.768	39.087	42.557	45.722	49.588	52.336
30	13.787	14.953	16.791	18.493	20.599	40.256	43.773	46.979	50.892	53.672
40	20.707	22.164	24.433	26.509	29.051	51.805	55.758	59.342	63.691	66.766
50	27.991	29.707	32.357	34.764	37.689	63.167	67.505	71.420	76.154	79.490
60	35.534	37.485	40.482	43.188	46.459	74.397	79.082	83.298	88.379	91.952
70	43.275	45.442	48.758	51.739	55.329	85.527	90.531	95.023	100.425	104.215
80	51.172	53.540	57.153	60.391	64.278	96.578	101.879	106.629	112.329	116.321
90	59.196	61.754	65.647	69.126	73.291	107.565	113.145	118.136	124.116	128.299
100	67.328	70.065	74.222	77.929	82.358	118.498	124.342	129.561	135.807	140.169

Table entry for p is the critical value F^* with probability p lying to its right.

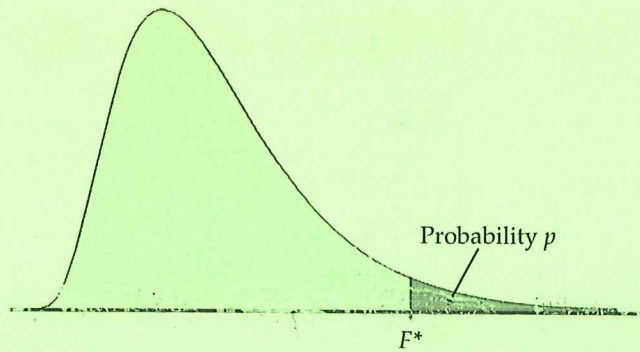


TABLE E

F critical values

		Degrees of freedom in the numerator									
p		1	2	3	4	5	6	7	8	9	
Degrees of freedom in the denominator	1	.100	39.86	49.50	53.59	55.83	57.24	58.20	58.91	59.44	59.86
		.050	161.45	199.50	215.71	224.58	230.16	233.99	236.77	238.88	240.54
		.025	647.79	799.50	864.16	899.58	921.85	937.11	948.22	956.66	963.28
		.010	4052.2	4999.5	5403.4	5624.6	5763.6	5859.0	5928.4	5981.1	6022.5
		.001	405284	500000	540379	562500	576405	585937	592873	598144	602284
	2	.100	8.53	9.00	9.16	9.24	9.29	9.33	9.35	9.37	9.38
		.050	18.51	19.00	19.16	19.25	19.30	19.33	19.35	19.37	19.38
		.025	38.51	39.00	39.17	39.25	39.30	39.33	39.36	39.37	39.39
		.010	98.50	99.00	99.17	99.25	99.30	99.33	99.36	99.37	99.39
		.001	998.50	999.00	999.17	999.25	999.30	999.33	999.36	999.37	999.39
	3	.100	5.54	5.46	5.39	5.34	5.31	5.28	5.27	5.25	5.24
		.050	10.13	9.55	9.28	9.12	9.01	8.94	8.89	8.85	8.81
		.025	17.44	16.04	15.44	15.10	14.88	14.73	14.62	14.54	14.47
		.010	34.12	30.82	29.46	28.71	28.24	27.91	27.67	27.49	27.35
		.001	167.03	148.50	141.11	137.10	134.58	132.85	131.58	130.62	129.86
	4	.100	4.54	4.32	4.19	4.11	4.05	4.01	3.98	3.95	3.94
		.050	7.71	6.94	6.59	6.39	6.26	6.16	6.09	6.04	6.00
		.025	12.22	10.65	9.98	9.60	9.36	9.20	9.07	8.98	8.90
		.010	21.20	18.00	16.69	15.98	15.52	15.21	14.98	14.80	14.66
		.001	74.14	61.25	56.18	53.44	51.71	50.53	49.66	49.00	48.47
5	.100	4.06	3.78	3.62	3.52	3.45	3.40	3.37	3.34	3.32	
	.050	6.61	5.79	5.41	5.19	5.05	4.95	4.88	4.82	4.77	
	.025	10.91	8.43	7.75	7.39	7.15	6.98	6.85	6.76	6.68	
	.010	18.26	13.27	12.00	11.39	10.97	10.67	10.46	10.29	10.16	
	.001	47.18	37.12	33.20	31.09	29.75	28.83	28.16	27.65	27.24	
6	.100	3.78	3.46	3.29	3.18	3.11	3.05	3.01	2.98	2.96	
	.050	5.99	5.14	4.76	4.53	4.39	4.28	4.21	4.15	4.10	
	.025	8.81	7.26	6.60	6.23	5.99	5.82	5.70	5.60	5.52	
	.010	13.75	10.92	9.78	9.15	8.75	8.47	8.26	8.10	7.98	
	.001	35.51	27.00	23.70	21.92	20.80	20.03	19.46	19.03	18.69	
7	.100	3.59	3.26	3.07	2.96	2.88	2.83	2.78	2.75	2.72	
	.050	5.59	4.74	4.35	4.12	3.97	3.87	3.79	3.73	3.68	
	.025	8.07	6.54	5.89	5.52	5.29	5.12	4.99	4.90	4.82	
	.010	12.25	9.55	8.45	7.85	7.46	7.19	6.99	6.84	6.72	
	.001	29.25	21.69	18.77	17.20	16.21	15.52	15.02	14.63	14.33	

Table entry for p is the critical value F^* with probability p lying to its right.

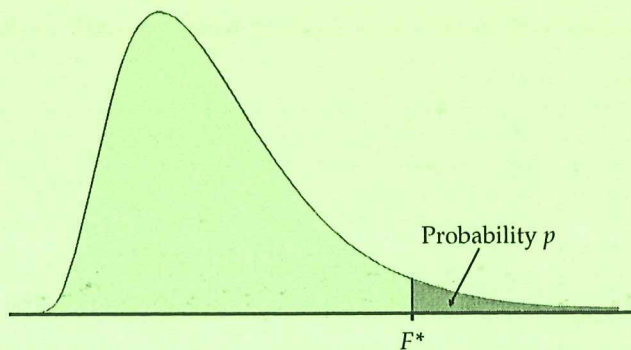


TABLE E

F critical values (continued)

Degrees of freedom in the numerator										
10	12	15	20	25	30	40	50	60	120	1000
60.19	60.71	61.22	61.74	62.05	62.26	62.53	62.69	62.79	63.06	63.30
241.88	243.91	245.95	248.01	249.26	250.10	251.14	251.77	252.20	253.25	254.19
968.63	976.71	984.87	993.10	998.08	1001.4	1005.6	1008.1	1009.8	1014.0	1017.7
6055.8	6106.3	6157.3	6208.7	6239.8	6260.6	6286.8	6302.5	6313.0	6339.4	6362.7
605621	610668	615764	620908	624017	626099	628712	630285	631337	633972	636301
9.39	9.41	9.42	9.44	9.45	9.46	9.47	9.47	9.47	9.48	9.49
19.40	19.41	19.43	19.45	19.46	19.46	19.47	19.48	19.48	19.49	19.49
39.40	39.41	39.43	39.45	39.46	39.46	39.47	39.48	39.48	39.49	39.50
99.40	99.42	99.43	99.45	99.46	99.47	99.47	99.48	99.48	99.49	99.50
999.40	999.42	999.43	999.45	999.46	999.47	999.47	999.48	999.48	999.49	999.50
5.23	5.22	5.20	5.18	5.17	5.17	5.16	5.15	5.15	5.14	5.13
8.79	8.74	8.70	8.66	8.63	8.62	8.59	8.58	8.57	8.55	8.53
14.42	14.34	14.25	14.17	14.12	14.08	14.04	14.01	13.99	13.95	13.91
27.23	27.05	26.87	26.69	26.58	26.50	26.41	26.35	26.32	26.22	26.14
129.25	128.32	127.37	126.42	125.84	125.45	124.96	124.66	124.47	123.97	123.53
3.92	3.90	3.87	3.84	3.83	3.82	3.80	3.80	3.79	3.78	3.76
5.96	5.91	5.86	5.80	5.77	5.75	5.72	5.70	5.69	5.66	5.63
8.84	8.75	8.66	8.56	8.50	8.46	8.41	8.38	8.36	8.31	8.26
14.55	14.37	14.20	14.02	13.91	13.84	13.75	13.69	13.65	13.56	13.47
48.05	47.41	46.76	46.10	45.70	45.43	45.09	44.88	44.75	44.40	44.09
3.30	3.27	3.24	3.21	3.19	3.17	3.16	3.15	3.14	3.12	3.11
4.74	4.68	4.62	4.56	4.52	4.50	4.46	4.44	4.43	4.40	4.37
6.62	6.52	6.43	6.33	6.27	6.23	6.18	6.14	6.12	6.07	6.02
10.05	9.89	9.72	9.55	9.45	9.38	9.29	9.24	9.20	9.11	9.03
26.92	26.42	25.91	25.39	25.08	24.87	24.60	24.44	24.33	24.06	23.82
2.94	2.90	2.87	2.84	2.81	2.80	2.78	2.77	2.76	2.74	2.72
4.06	4.00	3.94	3.87	3.83	3.81	3.77	3.75	3.74	3.70	3.67
5.46	5.37	5.27	5.17	5.11	5.07	5.01	4.98	4.96	4.90	4.86
7.87	7.72	7.56	7.40	7.30	7.23	7.14	7.09	7.06	6.97	6.89
18.41	17.99	17.56	17.12	16.85	16.67	16.44	16.31	16.21	15.98	15.77
2.70	2.67	2.63	2.59	2.57	2.56	2.54	2.52	2.51	2.49	2.47
3.64	3.57	3.51	3.44	3.40	3.38	3.34	3.32	3.30	3.27	3.23
4.76	4.67	4.57	4.47	4.40	4.36	4.31	4.28	4.25	4.20	4.15
6.62	6.47	6.31	6.16	6.06	5.99	5.91	5.86	5.82	5.74	5.66
14.08	13.71	13.32	12.93	12.69	12.53	12.33	12.20	12.12	11.91	11.72

(Continued)

TABLE E

F critical values (continued)

		Degrees of freedom in the numerator										
<i>p</i>		1	2	3	4	5	6	7	8	9		
Degrees of freedom in the denominator	8	.100	3.46	3.11	2.92	2.81	2.73	2.67	2.62	2.59	2.56	
		.050	5.32	4.46	4.07	3.84	3.69	3.58	3.50	3.44	3.39	
		.025	7.57	6.06	5.42	5.05	4.82	4.65	4.53	4.42	4.36	
		.010	11.26	8.65	7.59	7.01	6.63	6.37	6.18	6.03	5.91	
		.001	25.41	18.49	15.83	14.39	13.48	12.86	12.40	12.05	11.77	
		9	.100	3.36	3.01	2.81	2.69	2.61	2.55	2.51	2.47	2.44
		.050	5.12	4.26	3.86	3.63	3.48	3.37	3.29	3.23	3.18	
		.025	7.21	5.71	5.08	4.72	4.48	4.32	4.20	4.10	4.03	
		.010	10.56	8.02	6.99	6.42	6.06	5.80	5.61	5.47	5.35	
		.001	22.86	16.39	13.90	12.56	11.71	11.13	10.70	10.37	10.11	
		10	.100	3.29	2.92	2.73	2.61	2.52	2.46	2.41	2.38	2.35
		.050	4.96	4.10	3.71	3.48	3.33	3.22	3.14	3.07	3.02	
		.025	6.94	5.46	4.83	4.47	4.24	4.07	3.95	3.85	3.78	
		.010	10.04	7.56	6.55	5.99	5.64	5.39	5.20	5.06	4.94	
		.001	21.04	14.91	12.55	11.28	10.48	9.93	9.52	9.20	8.96	
		11	.100	3.23	2.86	2.66	2.54	2.45	2.39	2.34	2.30	2.27
		.050	4.84	3.98	3.59	3.36	3.20	3.09	3.01	2.95	2.90	
	.025	6.72	5.26	4.63	4.28	4.04	3.88	3.76	3.66	3.59		
	.010	9.65	7.21	6.22	5.67	5.32	5.07	4.89	4.74	4.63		
	.001	19.69	13.81	11.56	10.35	9.58	9.05	8.66	8.35	8.12		
	12	.100	3.18	2.81	2.61	2.48	2.39	2.33	2.28	2.24	2.21	
	.050	4.75	3.89	3.49	3.26	3.11	3.00	2.91	2.85	2.80		
	.025	6.55	5.10	4.47	4.12	3.89	3.73	3.61	3.51	3.44		
	.010	9.33	6.93	5.95	5.41	5.06	4.82	4.64	4.50	4.39		
	.001	18.64	12.97	10.80	9.63	8.89	8.38	8.00	7.71	7.48		
	13	.100	3.14	2.76	2.56	2.43	2.35	2.28	2.23	2.20	2.16	
	.050	4.67	3.81	3.41	3.18	3.03	2.92	2.83	2.77	2.71		
	.025	6.41	4.97	4.35	4.00	3.77	3.60	3.48	3.39	3.31		
	.010	9.07	6.70	5.74	5.21	4.86	4.62	4.44	4.30	4.19		
	.001	17.82	12.31	10.21	9.07	8.35	7.86	7.49	7.21	6.98		
	14	.100	3.10	2.73	2.52	2.39	2.31	2.24	2.19	2.15	2.12	
	.050	4.60	3.74	3.34	3.11	2.96	2.85	2.76	2.70	2.65		
	.025	6.30	4.86	4.24	3.89	3.66	3.50	3.38	3.29	3.21		
	.010	8.86	6.51	5.56	5.04	4.69	4.46	4.28	4.14	4.03		
	.001	17.14	11.78	9.73	8.62	7.92	7.44	7.08	6.80	6.58		
	15	.100	3.07	2.70	2.49	2.36	2.27	2.21	2.16	2.12	2.09	
	.050	4.54	3.68	3.29	3.06	2.90	2.79	2.70	2.64	2.59		
	.025	6.20	4.77	4.15	3.80	3.58	3.41	3.29	3.20	3.12		
	.010	8.68	6.36	5.42	4.89	4.56	4.32	4.14	4.00	3.89		
	.001	16.59	11.34	9.34	8.25	7.57	7.09	6.74	6.47	6.26		
	16	.100	3.05	2.67	2.46	2.33	2.24	2.18	2.13	2.09	2.06	
	.050	4.49	3.63	3.24	3.01	2.85	2.74	2.66	2.59	2.54		
	.025	6.12	4.69	4.08	3.73	3.50	3.34	3.22	3.12	3.05		
	.010	8.53	6.23	5.29	4.77	4.44	4.20	4.03	3.89	3.78		
	.001	16.12	10.97	9.01	7.94	7.27	6.80	6.46	6.19	5.98		
	17	.100	3.03	2.64	2.44	2.31	2.22	2.15	2.10	2.06	2.03	
	.050	4.45	3.59	3.20	2.96	2.81	2.70	2.61	2.55	2.49		
	.025	6.04	4.62	4.01	3.66	3.44	3.28	3.16	3.06	2.98		
	.010	8.40	6.11	5.19	4.67	4.34	4.10	3.93	3.79	3.68		
	.001	15.72	10.66	8.73	7.68	7.02	6.56	6.22	5.96	5.75		

TABLE E

F critical values (continued)

Degrees of freedom in the numerator										
10	12	15	20	25	30	40	50	60	120	1000
2.54	2.50	2.46	2.42	2.40	2.38	2.36	2.35	2.34	2.32	2.30
3.35	3.28	3.22	3.15	3.11	3.08	3.04	3.02	3.01	2.97	2.93
4.30	4.20	4.10	4.00	3.94	3.89	3.84	3.81	3.78	3.73	3.68
5.81	5.67	5.52	5.36	5.26	5.20	5.12	5.07	5.03	4.95	4.87
11.54	11.19	10.84	10.48	10.26	10.11	9.92	9.80	9.73	9.53	9.36
2.42	2.38	2.34	2.30	2.27	2.25	2.23	2.22	2.21	2.18	2.16
3.14	3.07	3.01	2.94	2.89	2.86	2.83	2.80	2.79	2.75	2.71
3.96	3.87	3.77	3.67	3.60	3.56	3.51	3.47	3.45	3.39	3.34
5.26	5.11	4.96	4.81	4.71	4.65	4.57	4.52	4.48	4.40	4.32
9.89	9.57	9.24	8.90	8.69	8.55	8.37	8.26	8.19	8.00	7.84
2.32	2.28	2.24	2.20	2.17	2.16	2.13	2.12	2.11	2.08	2.06
2.98	2.91	2.85	2.77	2.73	2.70	2.66	2.64	2.62	2.58	2.54
3.72	3.62	3.52	3.42	3.35	3.31	3.26	3.22	3.20	3.14	3.09
4.85	4.71	4.56	4.41	4.31	4.25	4.17	4.12	4.08	4.00	3.92
8.75	8.45	8.13	7.80	7.60	7.47	7.30	7.19	7.12	6.94	6.78
2.25	2.21	2.17	2.12	2.10	2.08	2.05	2.04	2.03	2.00	1.98
2.85	2.79	2.72	2.65	2.60	2.57	2.53	2.51	2.49	2.45	2.41
3.53	3.43	3.33	3.23	3.16	3.12	3.06	3.03	3.00	2.94	2.89
4.54	4.40	4.25	4.10	4.01	3.94	3.86	3.81	3.78	3.69	3.61
7.92	7.63	7.32	7.01	6.81	6.68	6.52	6.42	6.35	6.18	6.02
2.19	2.15	2.10	2.06	2.03	2.01	1.99	1.97	1.96	1.93	1.91
2.75	2.69	2.62	2.54	2.50	2.47	2.43	2.40	2.38	2.34	2.30
3.37	3.28	3.18	3.07	3.01	2.96	2.91	2.87	2.85	2.79	2.73
4.30	4.16	4.01	3.86	3.76	3.70	3.62	3.57	3.54	3.45	3.37
7.29	7.00	6.71	6.40	6.22	6.09	5.93	5.83	5.76	5.59	5.44
2.14	2.10	2.05	2.01	1.98	1.96	1.93	1.92	1.90	1.88	1.85
2.67	2.60	2.53	2.46	2.41	2.38	2.34	2.31	2.30	2.25	2.21
3.25	3.15	3.05	2.95	2.88	2.84	2.78	2.74	2.72	2.66	2.60
4.10	3.96	3.82	3.66	3.57	3.51	3.43	3.38	3.34	3.25	3.18
6.80	6.52	6.23	5.93	5.75	5.63	5.47	5.37	5.30	5.14	4.99
2.10	2.05	2.01	1.96	1.93	1.91	1.89	1.87	1.86	1.83	1.80
2.60	2.53	2.46	2.39	2.34	2.31	2.27	2.24	2.22	2.18	2.14
3.15	3.05	2.95	2.84	2.78	2.73	2.67	2.64	2.61	2.55	2.50
3.94	3.80	3.66	3.51	3.41	3.35	3.27	3.22	3.18	3.09	3.02
6.40	6.13	5.85	5.56	5.38	5.25	5.10	5.00	4.94	4.77	4.62
2.06	2.02	1.97	1.92	1.89	1.87	1.85	1.83	1.82	1.79	1.76
2.54	2.48	2.40	2.33	2.28	2.25	2.20	2.18	2.16	2.11	2.07
3.06	2.96	2.86	2.76	2.69	2.64	2.59	2.55	2.52	2.46	2.40
3.80	3.67	3.52	3.37	3.28	3.21	3.13	3.08	3.05	2.96	2.88
6.08	5.81	5.54	5.25	5.07	4.95	4.80	4.70	4.64	4.47	4.33
2.03	1.99	1.94	1.89	1.86	1.84	1.81	1.79	1.78	1.75	1.72
2.49	2.42	2.35	2.28	2.23	2.19	2.15	2.12	2.11	2.06	2.02
2.99	2.89	2.79	2.68	2.61	2.57	2.51	2.47	2.45	2.38	2.32
3.69	3.55	3.41	3.26	3.16	3.10	3.02	2.97	2.93	2.84	2.76
5.81	5.55	5.27	4.99	4.82	4.70	4.54	4.45	4.39	4.23	4.08
2.00	1.96	1.91	1.86	1.83	1.81	1.78	1.76	1.75	1.72	1.69
2.45	2.38	2.31	2.23	2.18	2.15	2.10	2.08	2.06	2.01	1.97
2.92	2.82	2.72	2.62	2.55	2.50	2.44	2.41	2.38	2.32	2.26
3.59	3.46	3.31	3.16	3.07	3.00	2.92	2.87	2.83	2.75	2.66
5.58	5.32	5.05	4.78	4.60	4.48	4.33	4.24	4.18	4.02	3.87

(Continued)

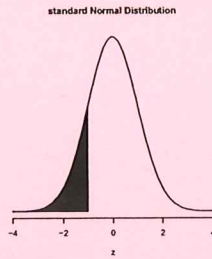


Table entry is the area under the standard normal curve to the left of the indicated z -value, that is $P(Z < z)$.

z	0.00	0.01	0.02	0.03	0.04	0.05	0.06	0.07	0.08	0.09
0.0	0.50000	0.50399	0.50798	0.51197	0.51595	0.51994	0.52392	0.52790	0.53188	0.53586
0.1	0.53983	0.54380	0.54776	0.55172	0.55567	0.55962	0.56356	0.56749	0.57142	0.57535
0.2	0.57926	0.58317	0.58706	0.59095	0.59483	0.59871	0.60257	0.60642	0.61026	0.61409
0.3	0.61791	0.62172	0.62552	0.62930	0.63307	0.63683	0.64058	0.64431	0.64803	0.65173
0.4	0.65542	0.65910	0.66276	0.66640	0.67003	0.67364	0.67724	0.68082	0.68439	0.68793
0.5	0.69146	0.69497	0.69847	0.70194	0.70540	0.70884	0.71226	0.71566	0.71904	0.72240
0.6	0.72575	0.72907	0.73237	0.73565	0.73891	0.74215	0.74537	0.74857	0.75175	0.75490
0.7	0.75804	0.76115	0.76424	0.76730	0.77035	0.77337	0.77637	0.77935	0.78230	0.78524
0.8	0.78814	0.79103	0.79389	0.79673	0.79955	0.80234	0.80511	0.80785	0.81057	0.81327
0.9	0.81594	0.81859	0.82121	0.82381	0.82639	0.82894	0.83147	0.83398	0.83646	0.83891
1.0	0.84134	0.84375	0.84614	0.84849	0.85083	0.85314	0.85543	0.85769	0.85993	0.86214
1.1	0.86433	0.86650	0.86864	0.87076	0.87286	0.87493	0.87698	0.87900	0.88100	0.88298
1.2	0.88493	0.88686	0.88877	0.89065	0.89251	0.89435	0.89617	0.89796	0.89973	0.90147
1.3	0.90320	0.90490	0.90658	0.90824	0.90988	0.91149	0.91309	0.91466	0.91621	0.91774
1.4	0.91924	0.92073	0.92220	0.92364	0.92507	0.92647	0.92785	0.92922	0.93056	0.93189
1.5	0.93319	0.93448	0.93574	0.93699	0.93822	0.93943	0.94062	0.94179	0.94295	0.94408
1.6	0.94520	0.94630	0.94738	0.94845	0.94950	0.95053	0.95154	0.95254	0.95352	0.95449
1.7	0.95543	0.95637	0.95728	0.95818	0.95907	0.95994	0.96080	0.96164	0.96246	0.96327
1.8	0.96407	0.96485	0.96562	0.96638	0.96712	0.96784	0.96856	0.96926	0.96995	0.97062
1.9	0.97128	0.97193	0.97257	0.97320	0.97381	0.97441	0.97500	0.97558	0.97615	0.97670
2.0	0.97725	0.97778	0.97831	0.97882	0.97932	0.97982	0.98030	0.98077	0.98124	0.98169
2.1	0.98214	0.98257	0.98300	0.98341	0.98382	0.98422	0.98461	0.98500	0.98537	0.98574
2.2	0.98610	0.98645	0.98679	0.98713	0.98745	0.98778	0.98809	0.98840	0.98870	0.98899
2.3	0.98928	0.98956	0.98983	0.99010	0.99036	0.99061	0.99086	0.99111	0.99134	0.99158
2.4	0.99180	0.99202	0.99224	0.99245	0.99266	0.99286	0.99305	0.99324	0.99343	0.99361
2.5	0.99379	0.99396	0.99413	0.99430	0.99446	0.99461	0.99477	0.99492	0.99506	0.99520
2.6	0.99534	0.99547	0.99560	0.99573	0.99585	0.99598	0.99609	0.99621	0.99632	0.99643
2.7	0.99653	0.99664	0.99674	0.99683	0.99693	0.99702	0.99711	0.99720	0.99728	0.99736
2.8	0.99744	0.99752	0.99760	0.99767	0.99774	0.99781	0.99788	0.99795	0.99801	0.99807
2.9	0.99813	0.99819	0.99825	0.99831	0.99836	0.99841	0.99846	0.99851	0.99856	0.99861
3.0	0.99865	0.99869	0.99874	0.99878	0.99882	0.99886	0.99889	0.99893	0.99896	0.99900
3.1	0.99903	0.99906	0.99910	0.99913	0.99916	0.99918	0.99921	0.99924	0.99926	0.99929
3.2	0.99931	0.99934	0.99936	0.99938	0.99940	0.99942	0.99944	0.99946	0.99948	0.99950
3.3	0.99952	0.99953	0.99955	0.99957	0.99958	0.99960	0.99961	0.99962	0.99964	0.99965
3.4	0.99966	0.99968	0.99969	0.99970	0.99971	0.99972	0.99973	0.99974	0.99975	0.99976
3.5	0.99977	0.99978	0.99978	0.99979	0.99980	0.99981	0.99981	0.99982	0.99983	0.99983
3.6	0.99984	0.99985	0.99985	0.99986	0.99986	0.99987	0.99987	0.99988	0.99988	0.99989
3.7	0.99989	0.99990	0.99990	0.99990	0.99991	0.99991	0.99992	0.99992	0.99992	0.99992
3.8	0.99993	0.99993	0.99993	0.99994	0.99994	0.99994	0.99994	0.99995	0.99995	0.99995
3.9	0.99995	0.99995	0.99996	0.99996	0.99996	0.99996	0.99996	0.99996	0.99997	0.99997

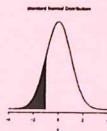


Table entry is the area under the standard normal curve to the left of the indicated z -value, that is $P(Z < z)$.

z	0.00	0.01	0.02	0.03	0.04	0.05	0.06	0.07	0.08	0.09
-0.0	0.50000	0.49601	0.49202	0.48803	0.48405	0.48006	0.47608	0.47210	0.46812	0.46414
-0.1	0.46017	0.45620	0.45224	0.44828	0.44433	0.44038	0.43644	0.43251	0.42858	0.42465
-0.2	0.42074	0.41683	0.41294	0.40905	0.40517	0.40129	0.39743	0.39358	0.38974	0.38591
-0.3	0.38209	0.37828	0.37448	0.37070	0.36693	0.36317	0.35942	0.35569	0.35197	0.34827
-0.4	0.34458	0.34090	0.33724	0.33360	0.32997	0.32636	0.32276	0.31918	0.31561	0.31207
-0.5	0.30854	0.30503	0.30153	0.29806	0.29460	0.29116	0.28774	0.28434	0.28096	0.27760
-0.6	0.27425	0.27093	0.26763	0.26435	0.26109	0.25785	0.25463	0.25143	0.24825	0.24510
-0.7	0.24196	0.23885	0.23576	0.23270	0.22965	0.22663	0.22363	0.22065	0.21770	0.21476
-0.8	0.21186	0.20897	0.20611	0.20327	0.20045	0.19766	0.19489	0.19215	0.18943	0.18673
-0.9	0.18406	0.18141	0.17879	0.17619	0.17361	0.17106	0.16853	0.16602	0.16354	0.16109
-1.0	0.15866	0.15625	0.15386	0.15151	0.14917	0.14686	0.14457	0.14231	0.14007	0.13786
-1.1	0.13567	0.13350	0.13136	0.12924	0.12714	0.12507	0.12302	0.12100	0.11900	0.11702
-1.2	0.11507	0.11314	0.11123	0.10935	0.10749	0.10565	0.10383	0.10204	0.10027	0.09853
-1.3	0.09680	0.09510	0.09342	0.09176	0.09012	0.08851	0.08691	0.08534	0.08379	0.08226
-1.4	0.08076	0.07927	0.07780	0.07636	0.07493	0.07353	0.07215	0.07078	0.06944	0.06811
-1.5	0.06681	0.06552	0.06426	0.06301	0.06178	0.06057	0.05938	0.05821	0.05705	0.05592
-1.6	0.05480	0.05370	0.05262	0.05155	0.05050	0.04947	0.04846	0.04746	0.04648	0.04551
-1.7	0.04457	0.04363	0.04272	0.04182	0.04093	0.04006	0.03920	0.03836	0.03754	0.03673
-1.8	0.03593	0.03515	0.03438	0.03362	0.03288	0.03216	0.03144	0.03074	0.03005	0.02938
-1.9	0.02872	0.02807	0.02743	0.02680	0.02619	0.02559	0.02500	0.02442	0.02385	0.02330
-2.0	0.02275	0.02222	0.02169	0.02118	0.02068	0.02018	0.01970	0.01923	0.01876	0.01831
-2.1	0.01786	0.01743	0.01700	0.01659	0.01618	0.01578	0.01539	0.01500	0.01463	0.01426
-2.2	0.01390	0.01355	0.01321	0.01287	0.01255	0.01222	0.01191	0.01160	0.01130	0.01101
-2.3	0.01072	0.01044	0.01017	0.00990	0.00964	0.00939	0.00914	0.00889	0.00866	0.00842
-2.4	0.00820	0.00798	0.00776	0.00755	0.00734	0.00714	0.00695	0.00676	0.00657	0.00639
-2.5	0.00621	0.00604	0.00587	0.00570	0.00554	0.00539	0.00523	0.00508	0.00494	0.00480
-2.6	0.00466	0.00453	0.00440	0.00427	0.00415	0.00402	0.00391	0.00379	0.00368	0.00357
-2.7	0.00347	0.00336	0.00326	0.00317	0.00307	0.00298	0.00289	0.00280	0.00272	0.00264
-2.8	0.00256	0.00248	0.00240	0.00233	0.00226	0.00219	0.00212	0.00205	0.00199	0.00193
-2.9	0.00187	0.00181	0.00175	0.00169	0.00164	0.00159	0.00154	0.00149	0.00144	0.00139
-3.0	0.00135	0.00131	0.00126	0.00122	0.00118	0.00114	0.00111	0.00107	0.00104	0.00100
-3.1	0.00097	0.00094	0.00090	0.00087	0.00084	0.00082	0.00079	0.00076	0.00074	0.00071
-3.2	0.00069	0.00066	0.00064	0.00062	0.00060	0.00058	0.00056	0.00054	0.00052	0.00050
-3.3	0.00048	0.00047	0.00045	0.00043	0.00042	0.00040	0.00039	0.00038	0.00036	0.00035
-3.4	0.00034	0.00032	0.00031	0.00030	0.00029	0.00028	0.00027	0.00026	0.00025	0.00024
-3.5	0.00023	0.00022	0.00022	0.00021	0.00020	0.00019	0.00019	0.00018	0.00017	0.00017
-3.6	0.00016	0.00015	0.00015	0.00014	0.00014	0.00013	0.00013	0.00012	0.00012	0.00011
-3.7	0.00011	0.00010	0.00010	0.00010	0.00009	0.00009	0.00008	0.00008	0.00008	0.00008
-3.8	0.00007	0.00007	0.00007	0.00006	0.00006	0.00006	0.00006	0.00005	0.00005	0.00005
-3.9	0.00005	0.00005	0.00004	0.00004	0.00004	0.00004	0.00004	0.00004	0.00003	0.00003

d.f	0.90	0.95	0.975	0.99
1	3.08	6.31	12.71	31.82
2	1.89	2.92	4.30	6.96
3	1.64	2.35	3.18	4.54
4	1.53	2.13	2.78	3.75
5	1.48	2.02	2.57	3.36
6	1.44	1.94	2.45	3.14
7	1.41	1.89	2.36	3.00
8	1.40	1.86	2.31	2.90
9	1.38	1.83	2.26	2.82
10	1.37	1.81	2.23	2.76
11	1.36	1.80	2.20	2.72
12	1.36	1.78	2.18	2.68
13	1.35	1.77	2.16	2.65
14	1.35	1.76	2.14	2.62
15	1.34	1.75	2.13	2.60
16	1.34	1.75	2.12	2.58
17	1.33	1.74	2.11	2.57
18	1.33	1.73	2.10	2.55
19	1.33	1.73	2.09	2.54
20	1.33	1.72	2.09	2.53
21	1.32	1.72	2.08	2.52
22	1.32	1.72	2.07	2.51
23	1.32	1.71	2.07	2.50
24	1.32	1.71	2.06	2.49
25	1.32	1.71	2.06	2.49
26	1.31	1.71	2.06	2.48
27	1.31	1.70	2.05	2.47
28	1.31	1.70	2.05	2.47
29	1.31	1.70	2.05	2.46
30	1.31	1.70	2.04	2.46
31	1.31	1.70	2.04	2.45
32	1.31	1.69	2.04	2.45
33	1.31	1.69	2.03	2.44
34	1.31	1.69	2.03	2.44
35	1.31	1.69	2.03	2.44
36	1.31	1.69	2.03	2.43
37	1.30	1.69	2.03	2.43
38	1.30	1.69	2.02	2.43
39	1.30	1.68	2.02	2.43
40	1.30	1.68	2.02	2.42

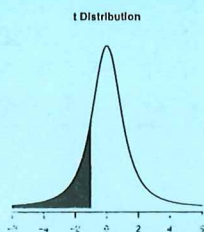


Table entries are to the left of the indicated t value

